

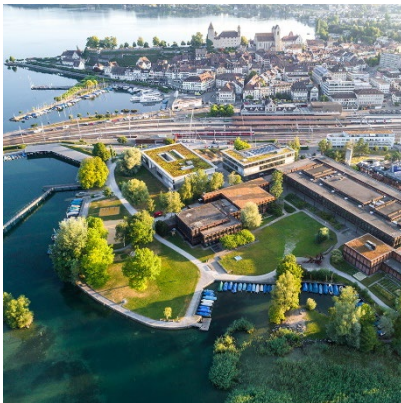
Address **Eastern Switzerland University of Applied Sciences (OST)**
International Office
iro@ost.ch

Website: www.ost.ch/en/international

Erasmus Code CH ST.GALL08

Factsheet of School of Technology (T)
School of Computer Science (I)
School of Architecture, Civil Engineering, Landscape Architecture, Spatial Planning (ABLR)

Campus Rapperswil (T, I, ABLR)



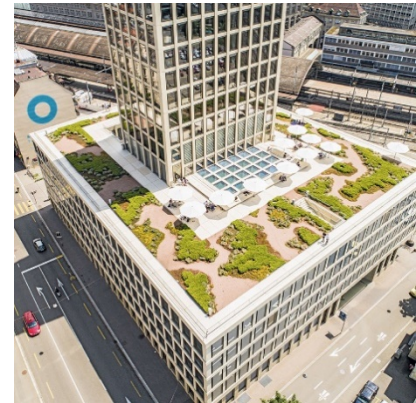
Campus Rapperswil
Oberseestrasse 10
8640 Rapperswil, Switzerland
+41 58 257 44 33

Campus Buchs (T)



Campus Buchs
Werdenbergstrasse 4
9471 Buchs, Switzerland
+41 58 257 33 11

Campus St.Gallen (T, I, ABLR)



Campus St.Gallen
Rosenbergstrasse 59
9001 St.Gallen, Switzerland
+41 58 257 14 00

Studienzentrum Waldau St. Gallen
Schönauweg 4
9000 St.Gallen, Switzerland
+41 58 257 32 00

International Office, Schools T, I, ABLR

Contact person	Function	Contact data
Prof. Isabelle Zulauf-Poli	Director of International Relations	isabelle.zulauf@ost.ch
Ms. Magdalena Schreiber	Head International Office and International Coordinator overseas	magdalena.schreiber@ost.ch
Ms. Manolya Ucak	International Coordinator Europe	manolya.ucak@ost.ch
Mr. Mathias Kleiner	International Coordinator Industrial Engineering,	mathias.kleiner@ost.ch

Swiss-European Mobility Program SEMP 2021/23 (replaces Erasmus+ in Switzerland)

General information:	On arrival, incoming students from European partner universities will receive funding from the Swiss-European Mobility Program.	
Incoming students from:	DK, FI, IS, IE, LI, LU, NO, SE, UK	CHF 1900 /semester
	AT, BE, BG, CY, CZ, DE, EE, ES, FR, GR, HR, HU, IT, LT, LV, MK, MT, NL, PL, PT, RO, RS, SI, SK, TR	CHF 2200 /semester
Incoming lecturer/staff:	Day 1 to 14: CHF 170/day Day 15 to 60: CHF 80/day	plus travel expenses of up to CHF 600

Academic Information

	Fall semester dates	Spring semester dates
Nomination deadlines:	01 June	01 November
Application deadlines:	15 June	15 November
Orientation session:	Week before semester begin	Week before semester begin
Semester:	Mid-September to mid-February	Mid-February to mid-September
Examination period:	January (weeks 3-5)	June (weeks 25-27)

Nomination and Application Procedure

Applicants must be officially nominated by their home university for their exchange semester.

Application documents:	Application form Passport-sized photo Learning agreement Proof of language proficiency	Proof of health insurance Official transcript of records Scan of passport or ID card
-------------------------------	---	--

Level / courses / programs offered:

School of Technology

Bachelor of Science in Electrical Engineering (Rapperswil)
 Bachelor of Science in Renewable Energies and Environmental Engineering (Rapperswil)
 Bachelor of Science in Mechanical Engineering and Innovation (Rapperswil)
 Bachelor of Science in Systems Engineering specializing in:

- Computational Engineering (Buchs and/or Waldau St.Gallen)
- Computer Science (Buchs and/or Waldau St.Gallen)
- Electronics and Control Engineering (Buchs and/or Waldau St.Gallen)
- Mechanical Engineering (Buchs and/or Waldau St.Gallen)
- Microtechnology (Buchs)
- Photonics (Buchs)

Bachelor of Science in Industrial Engineering and Management (Rapperswil, St.Gallen)

School of Computer Science

Bachelor of Science in Computer Science (Rapperswil, St.Gallen)

School of Architecture, Civil Engineering, Landscape Architecture, Spatial Planning

Bachelor of Science in Landscape Architecture (Rapperswil)
 Bachelor of Science in Spatial Planning (Rapperswil)
 Bachelor of Science in Civil Engineering (Rapperswil)
 Bachelor of Arts in Architecture (St.Gallen)

Master of Science in Engineering (MSE) with 11 profiles (Rapperswil, Buchs, St.Gallen and Zurich):

- | | |
|--------------------------------|--|
| - Business Engineering | - Mechanical Engineering |
| - Civil Engineering Automation | - Mechatronics & Automation |
| - Computer Science | - Medical Engineering |
| - Data Science | - Photonics |
| - Electrical Engineering | - Spatial Development and Landscape Architecture |
| - Energy and Environment | |

Please note: In general, the academic level at OST is considered to be high.

Language of instruction:

Language requirements:

English or German

English: TOEFL / IELTS, Pearson Test of English (Academic) or equivalent
 Score: TOEFL paper based 550, internet-based 79; IELTS 6.0; PTE Academic 50 pts, CEFR level B2 or equivalent

German: CEFR level B2 or equivalent

(In the absence of a formal language certificate, confirmation of a student's language skills at the required level issued by the home institution may be accepted.)

German refresher Course

German beginner class offered every semester. There is a 3-week intensive German refresher course (B1/B2) only before the autumn semester. This costs CHF 700.-.

Course selection / procedure:

Course choice to be made with the international coordinator at the home institution. Courses can be changed within two weeks of the official semester start (contingent on the availability of places).

Course load per semester: Depending on the home institution's requirements. A normal ECTS load is 30 credits per semester.

Overview of courses in English

Students can choose courses from different degree programs but should only take courses at one campus (Rapperswil OR Buchs OR St.Gallen).

• Bachelor of Science in Electrical Engineering (Campus Rapperswil)

Spring semester

Course name	ECTS
Digital Signal Processing II	4
Image Processing & Computer Vision II	4
Deep Learning	4
Wireless Communications II	4
Term Project	8
Mathematical Foundations for Machine Learning	4

Fall semester

Course name	ECTS
Digital Signal Processing I	4
Image Processing & Computer Vision I	4
Statistical Machine Learning	4
Wireless Communications I	4
Term Project	8

For course description please click on the course name

Courses in German: [Bachelorstudium Elektrotechnik | OST](#)

• Bachelor of Science in Renewable Energies and Environmental Engineering (Campus Rapperswil)

Spring semester

Course name	ECTS
Photovoltaics	4
Thermal Solar Technology II	2
Urban Mining	2
Bachelor's Thesis	12

Fall semester

Course name	ECTS
Programming with Matlab	2
Thermal Solar Technology I	4
Building Technologies	4
Electrical Energy Technology	4
Numerical Simulations (FEM and CFD)	4
Student Project	8

For course description please click on the course name

Courses in German: [Bachelor Erneuerbare Energien und Umwelttechnik | OST](#)

• Bachelor of Science in Mechanical Engineering and Innovation (Campus Rapperswil)

Spring semester

Course name	ECTS
Deep Learning	4

Fall semester

Course name	ECTS
Statistical Machine Learning	4

For course description please click on the course name

Courses in German: [Bachelor Maschinentchnik|Innovation | OST](#)

• Bachelor of Science in Industrial Engineering (Campus Rapperswil)

Spring semester

Course name	ECTS
Lean Production	4
SF-Robotics	4
SP-Data Science	4
VN-Value Chain Networks	4
International Study Week	4

Fall semester

Course name	ECTS
Logistics and Supply Chain Management	4
SF-Smart Factory	4
SF-Smart Products	4
VN-Additive Manufacturing I	4

For course description please contact iro@ost.ch

Courses in German: [Bachelor in Wirtschaftsingenieurwesen | OST](#)

• Bachelor of Science in Industrial Engineering (Campus St.Gallen)

Spring semester

Course name	ECTS
Industrial Product Development Project	30
Swiss Business Experience	5

Fall semester

Course name	ECTS
Industrial Product Development Project	30
Swiss Business Experience	5

For course description please contact iro@ost.ch

Courses in German: [Bachelor in Wirtschaftsingenieurwesen | OST](#)

• **Bachelor of Science in Systems Engineering (Campus Buchs)**

Spring semester		Fall semester	
Course name	ECTS	Course name	ECTS
Cloud Computing	2	Distributed Systems	4
Computer Communications	4	Electromagnetic Compatibility	2
Deep Reinforcement Learning	2	Thermal Energy Systems I	4
Digital Filters	2	Web Programming	2
Internet of Things	2	Global Design Project	2
Microcontroller Programming	4	Term Project	8-30
Thermal Energy Systems II	2		
Global Design Project	2		
Term Project	8-30		

For course description please contact iro@ost.ch

Courses in German: [Bachelor Systemtechnik | OST](#)

• **Bachelor of Science in Computer Science (Campus Rapperswil)**

Spring semester		Fall semester	
Course name	ECTS	Course name	ECTS
Deep Learning	4	Statistical Machine Learning	4
Image Processing & Computer Vision II	4	Image Processing & Computer Vision I	4
Mathematical Foundations for Machine Learning	4	Software Engineering I	4
Programming Languages and Formal Methods	4		

For course description please click on the course name

Courses in German: [Bachelor Informatik | OST](#)

• **Bachelor of Science in Landscape Architecture (Campus Rapperswil)**

There are just the general courses in English available.

Courses in German: [Bachelor Landschaftsarchitektur | OST](#)

• **Bachelor of Science in Spatial Planning (Campus Rapperswil)**

There are just the general courses in English available.

Courses in German: [Bachelor Stadt-, Verkehrs- und Raumplanung | OST](#)

• **Bachelor of Science in Civil Engineering (Campus Rapperswil)**

There are just the general courses in English available.

Courses in German: [Bachelor Bauingenieurwesen | OST](#)

• **Bachelor of Arts in Architecture (Campus St.Gallen)**

There are just the general courses in English available. For course description please contact iro@ost.ch

Courses in German: [Bachelor Architektur | OST](#)

• **General courses in the bachelor program**

Spring semester (Campus Rapperswil)			
Course name	CEFR-level	ECTS	Study program
English: Selling Technology	B2-C1	4	Electrical Engineering, Mechanical Engineering and Innovation, Computer Science, Landscape Architecture, Civil Engineering
English: Where Tech Meets	BEC	4	Electrical Engineering, Mechanical Engineering and Innovation, Computer Science, Spatial Planning, Civil Engineering
French communication I	B1-2	4	Electrical Engineering, Renewable Energies and Environmental Engineering, Mechanical Engineering and Innovation, Computer Science, Landscape Architecture, Spatial Planning, Civil Engineering
Fall semester (Campus Rapperswil)			
Course name	CEFR-level	ECTS	Study program
English: How things work	B2-C1	4	Electrical Engineering, Renewable Energies and Environmental Engineering, Mechanical Engineering and Innovation, Computer Science, Landscape Architecture, Spatial Planning, Civil Engineering

English: The World of Science	B2–C1	4	Electrical Engineering, Renewable Energies and Environmental Engineering, Mechanical Engineering and Innovation, Computer Science, Spatial Planning, Civil Engineering
French communication II	B2-1	4	Electrical Engineering, Renewable Energies and Environmental Engineering, Mechanical Engineering and Innovation, Computer Science, Spatial Planning, Civil Engineering

• Master of Science in Engineering

This [engineering study program](#) is common to all universities of applied sciences in Switzerland. While [a range of modules](#) are taught at centralized locations in Switzerland, specialization modules are taught locally. Most of the courses at this level are in English. Please contact us for more information about [our specializations](#).

Travel times between campuses

One way	By public transport (approx. times by train + walking distance)	By car (approx. fastest route outside peak times without parking – see below)
Buchs – Rapperswil	70 mins + 10 mins	60 mins
Rapperswil – St.Gallen	50-60 mins + 5 mins	60 mins
St.Gallen – Buchs	50 mins + 10 mins	40 mins

Further Information

Example of costs per month in CHF:

Accommodation: 400 – 700, food: 400, public transport: 70, books: 60,
health insurance (can be waived): 80; entertainment: 150
Total per month: approx. 1300 – 1600

Visa:

EU/EFTA: No visa required for students from EU/EFTA countries.
Non-EU Students: will receive documents from the International Office at OST to apply for a Swiss visa in their home country. For country-specific requirements, please refer to the website of the Swiss Embassy/Consulate:
www.eda.admin.ch/eda/en/home/rebs.html
All students: A residence permit must be obtained after entering Switzerland. The costs for the visa and the residence permit are paid by the student.

Health insurance

You must have a health insurance which is valid in Switzerland.
EU/EFTA: European Health Insurance Card, EHIC.
Non-EU Students: Proof of health insurance valid in Switzerland. Health insurance provider in home country signs an exemption form together with a copy of the insurance policy in English, both documents will be evaluated by the local authorities in St.Gallen. If the documents are not accepted by the local authorities, students are obliged to sign up for a Swiss health insurance (approx. CHF 86.00/month).

Accommodation:

Campus Rapperswil: Student housing: 10min by bus to the Campus, several shared apartments with 6 rooms each only for exchange students, CHF 590 monthly. Please contact: iro@ost.ch

Campus Buchs: No on-campus accommodation. Rooms in shared flats and private accommodation in or near Buchs, approx. CHF 400 - CHF 700 monthly. Please contact for help in finding an accommodation: iro@ost.ch

Campus St.Gallen: No on-campus accommodation. Rooms in shared flats and studios with other exchange students, CHF 550 - CHF 700 monthly. Application deadlines: 15 May/15 October. For help please contact: iro@ost.ch

- Facilities:** Canteen and cafeteria at all three locations
- Library at all three locations: see <https://www.ost.ch/en/university-of-applied-sciences/library/>
Access to library at HSG University in St.Gallen: see www.biblio.unisg.ch
- Sports facilities
Sport at Campus Rapperswil-Jona: see <https://www.ost.ch/en/university-of-applied-sciences/rapperswil-campus/sport/>
Access to sports facilities at HSG University in St.Gallen: see www.unisg.ch/de/hsgservices/sport
Many outdoor activities possible in the whole region - from skiing and snowboarding in winter to hiking and biking in summer.
- Parking:** Campus Rapperswil: No parking on campus for students; public car park at 10 minutes' walking distance (no free parking). Private Parking can be rented via <https://www.immoscout24.ch/de/parkplatz/mieten/ort-jona>
- Campus Buchs: Free parking on campus.
- Campus St.Gallen: Multi-storey car park next to the campus (no free parking).
- Waldau St.Gallen: Free parking on campus.
- Miscellaneous:** Buddy program: all students are allocated to a Swiss buddy who will offer support and show them around the campus and the town. The Swiss students will contact the exchange students prior to arrival with support from the International Office.
- Work permits and regulations:** Non-EU students are not allowed to work in Switzerland. EU students are currently permitted to work up to 15 hours per week.